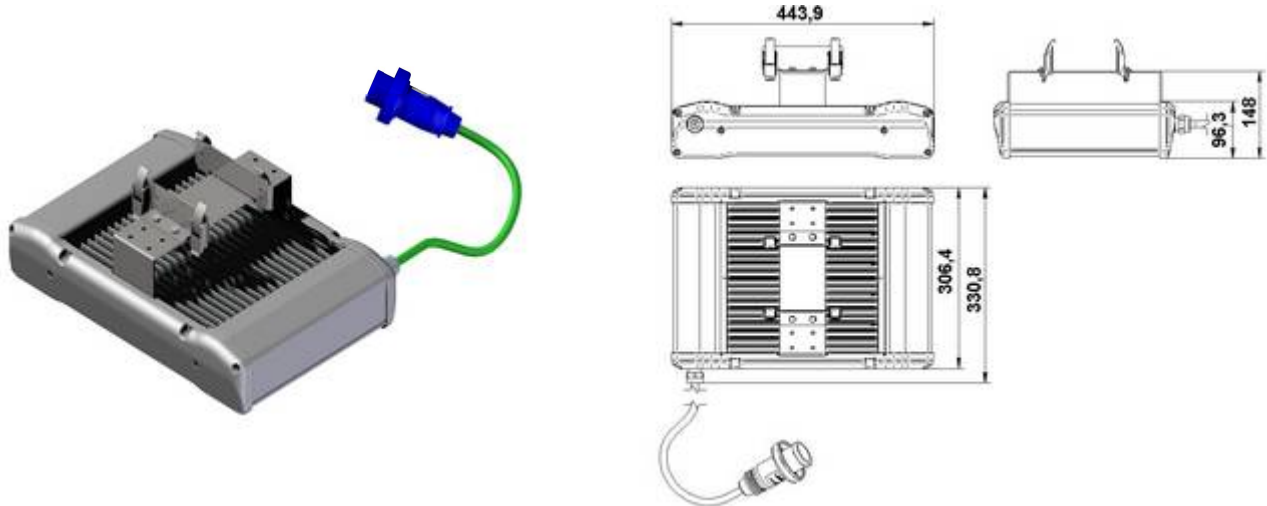


LEDWAY Tunnel



Code	Light bars	Number of LED	System Power (VA)			Lumen (lm)
			@175mA	@350mA (Standard Version)	@525mA	@350mA (Standard Version)
LYT##T04BSV	2	40	27	53	80	4.000
LYT##T06BSV	3	60	39	78	117	6.000
LYT##T08BSV	4	80	52	104	156	8.000

Power Factor 0,9

Modular light system for permanent lighting of tunnels.

Housing is all in aluminum construction, all components are 100% mercury free and totally recyclable. Sharp profile for low wind exposition. Electrical components compartment in die cast aluminium. LED Lightbars applied on an aluminum extrusion designed for best thermal management thank to the Ruud AirFlow Tecnology. This system ensures long life and maximum yield. Exclusive ColorFast DeltaGuard® finish features an E-Coat epoxy primer with an ultra-durable silver powder topcoat, providing excellent resistance to corrosion, ultraviolet degradation and abrasion. The finish is covered by our Deltaguard® 10 year limited warranty.

LED LightBar modules made of 20 Class 1 (EN 60825-1) LEDs with light system rated power between 40 and 80 LEDs, 6000°K Color temperature, CRI ≥ 75. available also in 4300°K and 3500°K color Temperature LED. Main dissipation body in extruded aluminium with an integrated printed gasket designed around the geometry of the lenses to guarantee an IP66 degree of protection. High-performance and precision lenses made of Ruud NanoOptic® patented technology. Photometric performance and curves selectable for any application requested.

Internal high-performance and reliability electronic constant current driver, set at 350mA driving current (as standard version), available also with driving current at 175mA, 525mA.

Mounting assembly made of plate and n.4 laches for a fast coupling to a cable channels, all made of stainless steel AISI 304. Product is supplied with 1,5mt cable and plug type CEE 2P+T 16A 230V IP67.

Five years Limited warranty on LEDs and drivers. Insulation Class II. Power factor 90%. Degree of Protection IP66. Compliant with: EN 60598-1 and EN 60598-2-3. Operating temperature: - 40°C ÷ + 55°C. Impact resistance IK08.

Rated Voltage: 220 - 240Vac (capable 120-277Vac) 50÷ 60Hz.

Ledway Tunnel is available with the "option G" Multi-level for Flux dimming control, see the Multi-level option spec sheet (G Option) on www.ruudled.net

	Driver Current	Lumen Multiplier	Power Multiplier	L ₇₀ Life* (hours)	L ₈₀ Life* (hours)
Ledway Tunnel	175 mA	0,6	0,5	> 150.000	> 150.000
Ledway Tunnel	350 mA (standard)	1	1	> 150.000	> 100.000
Ledway Tunnel	525 mA	1,3	1,5	> 65.000	> 35.000
* Based on fixture operating at 15° C.					

Color Temperature	Lumen Multiplier
6000K (standard)	1,00
4300K	0,80
3500K	0,75

Accessories:

- BRDSPK: Bird Spike

Colours
 Standard
 Finish



Silver

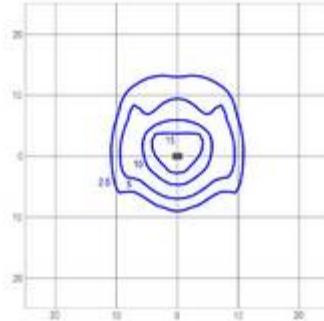
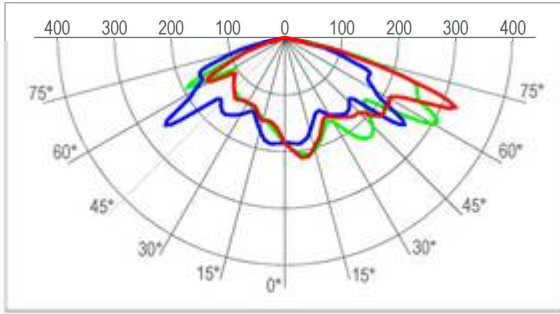


ECO LIGHT

Photometric information

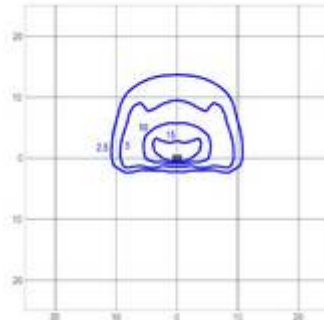
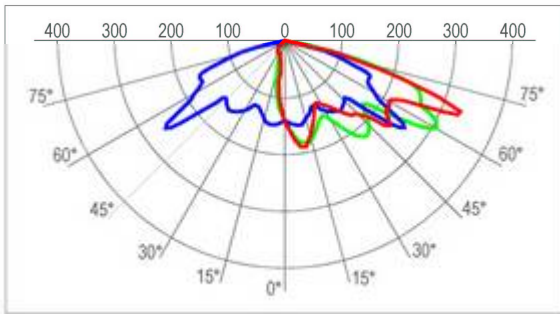
Polar curves refer to actual photometric tests by independent laboratories. For lighting calculations and layouts refer to Initial delivered lumens chart and use Light Loss Factor equal to 0,9.

AC Optic



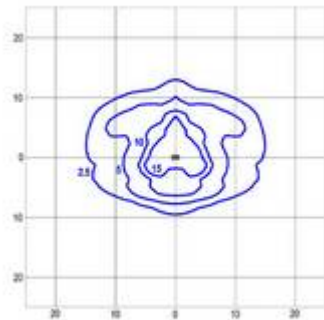
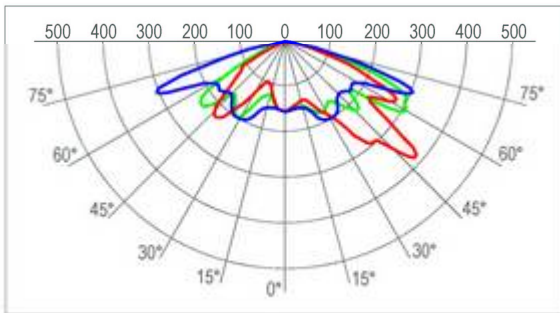
3 Lightbars (60 LED) 6 mt. height isolux diagram.

ACB Optic



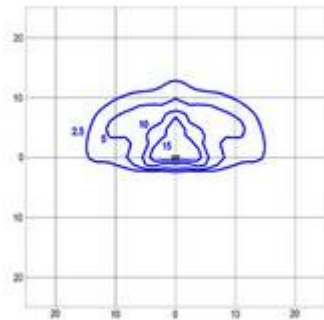
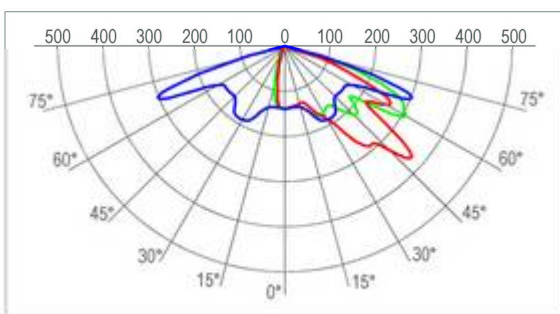
3 Lightbars (60 LED) 6 mt. height isolux diagram

PR Optic



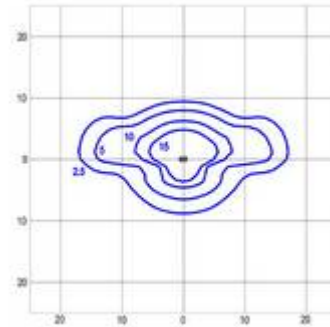
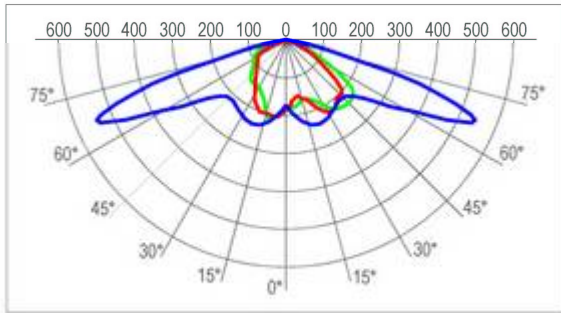
3 Lightbars (60 LED) 6 mt. height isolux diagram

PRB Optic



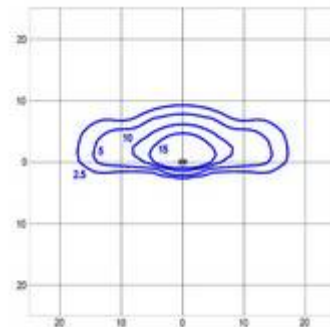
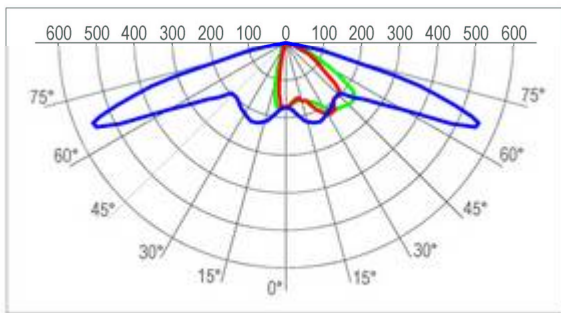
3 Lightbars (60 LED) 6 mt. height isolux diagram

TL Optic



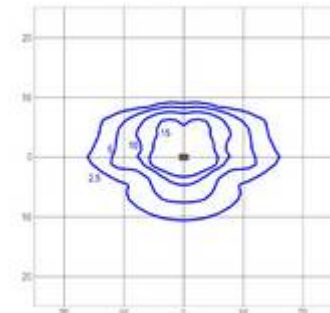
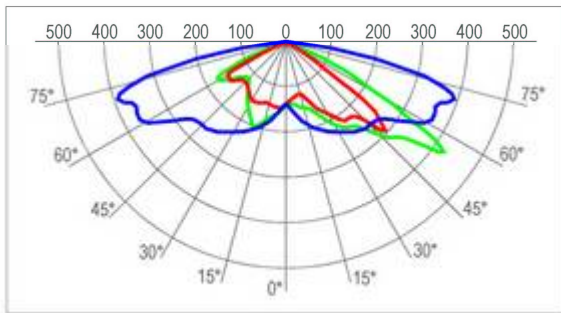
3 Lightbars (60 LED) 6 mt. height isolux diagram

TLB Optic



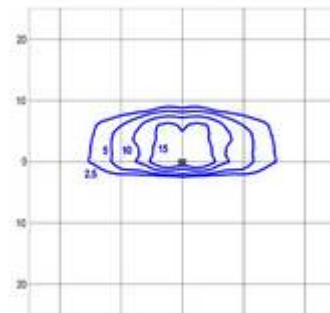
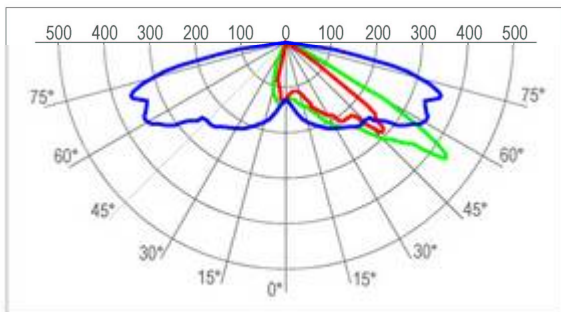
3 Lightbars (60 LED) 6 mt. height isolux diagram

TS Optic



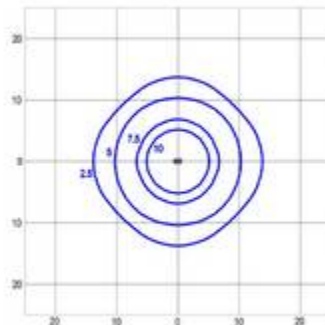
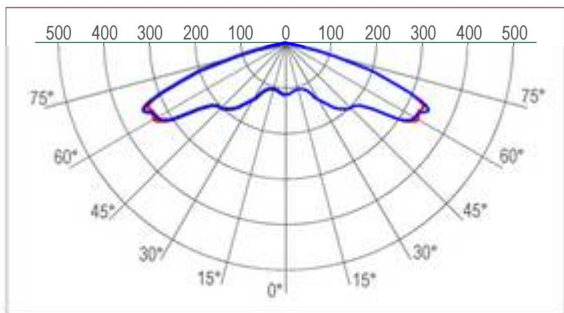
3 Lightbars (60 LED) 6 mt. height isolux diagram

TSB Optic



3 Lightbars (60 LED) 6 mt. height isolux diagram

Ottica QV



3 Lightbars (60 LED) 6 mt. height isolux diagram