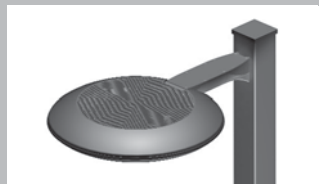




### Ledway Street

Modular lighting system for pole installations for lighting roads, parking, green areas and crossovers: complete with main body, power LED modules with multiple configurations, and internal electronic driver. Main body made of extruded aluminum with rectangular section and variable length according to the number of power LED modules used (from 40W, 2 bars up to 240W, 12 bars).



### Ledway Round

Modular lighting system for pole installations for lighting roads, parking, green areas and crossovers: complete with main body, power LED modules with multiple configurations, and internal electronic driver. Main body made of extruded aluminum with round section and variable length according to the number of power LED modules used (from 40W, 2 bars up to 120W, 6 bars).



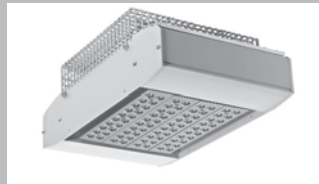
### Ledway Wall

Modular lighting system for wall installations complete with main body, power LED modules with multiple configurations, and internal electronic driver. Main body made of extruded aluminum with rectangular section and variable length according to the number of power LED modules used (from 40W, 2 bars up to 120W, 6 bars).



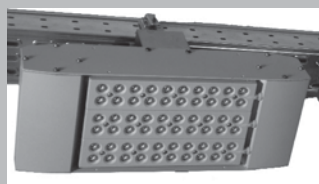
### Ledway Canopy

Modular lighting system for canopy installations and all other ceiling applications complete with main body, power LED modules with multiple configurations, and internal electronic driver. Main body made of extruded aluminum with rectangular section and variable length according to the number of power LED modules used (from 40W, 2 bars up to 240W, 12 bars).



### Ledway Park

Modular lighting system for parking, underpass and many others ceiling applications; complete with main body, power LED modules with multiple configurations, and internal electronic driver. Main body made of extruded aluminum with rectangular section and variable length according to the number of power LED modules used (from 40W, 2 bars up to 100W, 5 bars).



### Ledway Tunnel

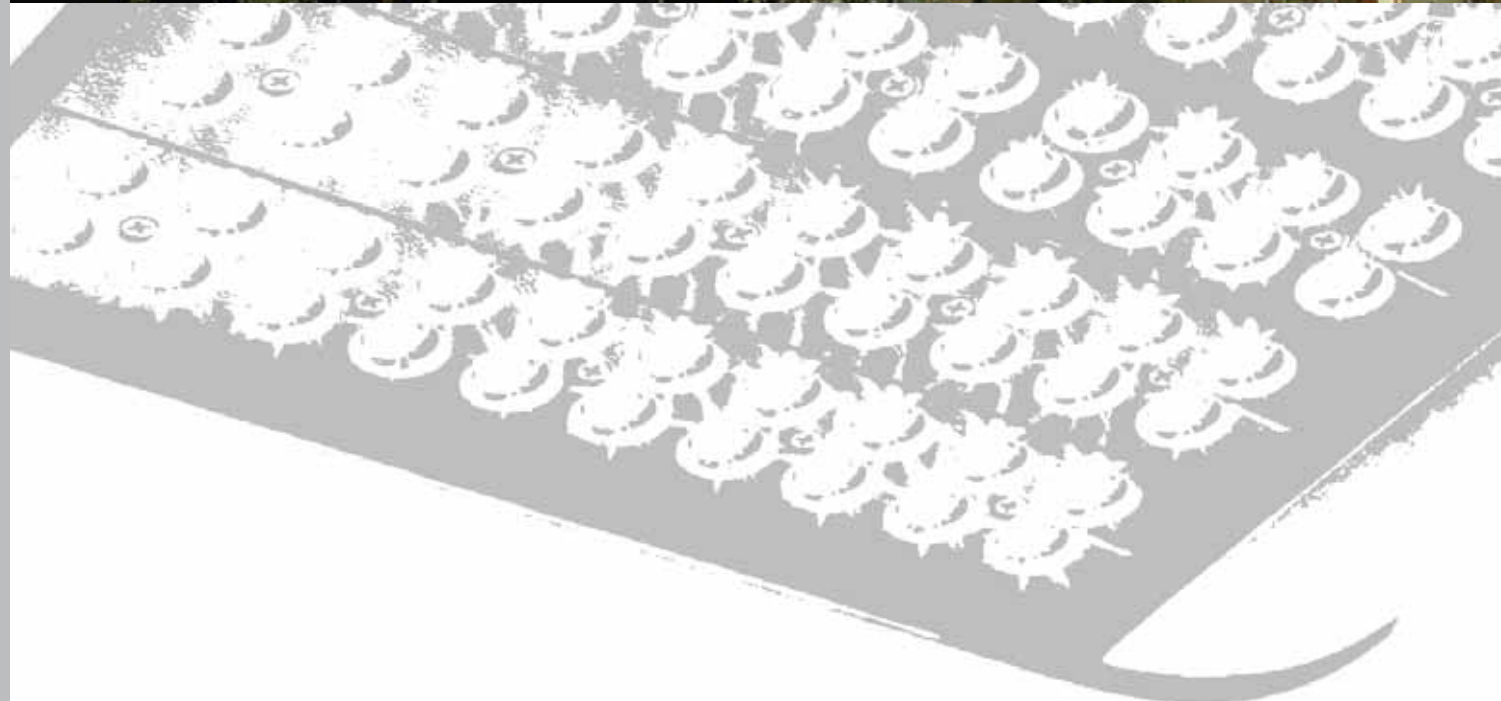
Modular lighting system specially designed for tunnels; complete with main body, power LED modules with multiple configurations, and internal electronic driver. Main body made of extruded aluminum with rectangular section and variable length according to the number of power LED modules used (from 40W, 2 bars up to 80W, 4 bars).



### Bollard

Product designed for lighting pedestrian walks, green areas and for urban décor: LEDWAY Bollard features an 18 LED system, each by 1W with symmetric distribution at 360° and asymmetric at 180°.

LEDWAY.  
The future is now.



**RUUD**  
LIGHTING

**RUUD**  
LIGHTING

[www.ruudlighting.net](http://www.ruudlighting.net)  
[www.ruudled.net](http://www.ruudled.net)



LEDWAY. It will grow up with our kids,  
but it won't need any care.

**Product:** LEDWAY Street Luminaire

**Project:** The installation included eight LEDWAY Street luminaires with four light bars (80W) each. Asymmetric road optic PR was mounted onto an eight-meter pole with an inter distance of 28 meters. Initial delivered lumen 6400 per fixture. LEDWAY replaces 150-watt HPS fixtures with the same mounting.

**Energy Savings:** Energy savings from reduced power consumption (80W LED compared to 150W HPS) is about 45 percent. Thanks to the G2 option, a special device able to reduce power consumption to half, 65 percent of lumens are maintained. Total energy savings is around 61 percent.

**Luminance:** (80W LED compared to 150W HPS) Data LED: average of 10Lux, uniformity 0.70–Ra 75. Data HPS: average of 16Lux, uniformity 0.43–Ra 25. The lower luminance level obtained with the LED is compensated with an higher uniformity and with a better visual perception due to the white light.

**Extended Life:** With an average yearly temperature of 15 degrees Celsius, LEDWAY has a life rating of more than 30 years. A key to extended life rating is efficient thermal management.

The integrated thermal design of the housing maximizes on the slightest amount of airflow to draw heat away from the

LEDs. Each LED light bar is mounted to a heat sink to assure LEDs are operating at the optimal temperature. THE EDGE's signature mesh top is designed to minimize debris build-up on the heat sinks and allows for self-cleaning of the unit.

**Improved Light Uniformity:** The key to control LED output is the optical system. THE EDGE uses the NanoOptic™, a direct-contact refractor that encases the LEDs for maximum output and optimal light control. The NanoOptic refractor minimizes all light losses and creates efficiencies much greater than traditional reflectors - up to 90 percent.

**Reduced Maintenance Costs:** LEDWAY products are self-cleaning, significantly reducing maintenance costs. Extended life rating also means less waste.

**Positive Environmental Impact:** LEDWAY is reliable, safe and durable. LEDs have no arc tube or bulb, is vibration and impact resistant and do not contain mercury or lead. When properly engineered, LED life is more than five times that of metal halide lamps, reducing environmental waste.

**Warranty:** 5 years on product, 10 years on DeltaGuard™ finish



**RUUD  
LIGHTING**

[www.ruudlighting.net](http://www.ruudlighting.net)

[www.ruudled.net](http://www.ruudled.net)