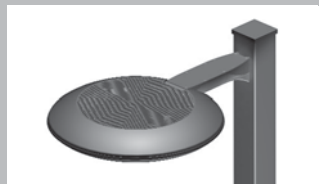




Ledway Street

Modular lighting system for pole installations for lighting roads, parking, green areas and crossovers: complete with main body, power LED modules with multiple configurations, and internal electronic driver. Main body made of extruded aluminum with rectangular section and variable length according to the number of power LED modules used (from 40W, 2 bars up to 240W, 12 bars).



Ledway Round

Modular lighting system for pole installations for lighting roads, parking, green areas and crossovers: complete with main body, power LED modules with multiple configurations, and internal electronic driver. Main body made of extruded aluminum with round section and variable length according to the number of power LED modules used (from 40W, 2 bars up to 120W, 6 bars).



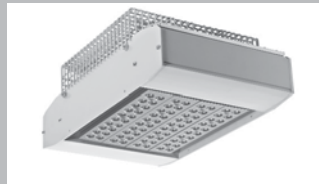
Ledway Wall

Modular lighting system for wall installations complete with main body, power LED modules with multiple configurations, and internal electronic driver. Main body made of extruded aluminum with rectangular section and variable length according to the number of power LED modules used (from 40W, 2 bars up to 120W, 6 bars).



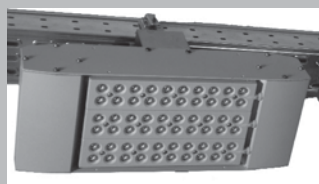
Ledway Canopy

Modular lighting system for canopy installations and all other ceiling applications complete with main body, power LED modules with multiple configurations, and internal electronic driver. Main body made of extruded aluminum with rectangular section and variable length according to the number of power LED modules used (from 40W, 2 bars up to 240W, 12 bars).



Ledway Park

Modular lighting system for parking, underpass and many others ceiling applications; complete with main body, power LED modules with multiple configurations, and internal electronic driver. Main body made of extruded aluminum with rectangular section and variable length according to the number of power LED modules used (from 40W, 2 bars up to 100W, 5 bars).



Ledway Tunnel

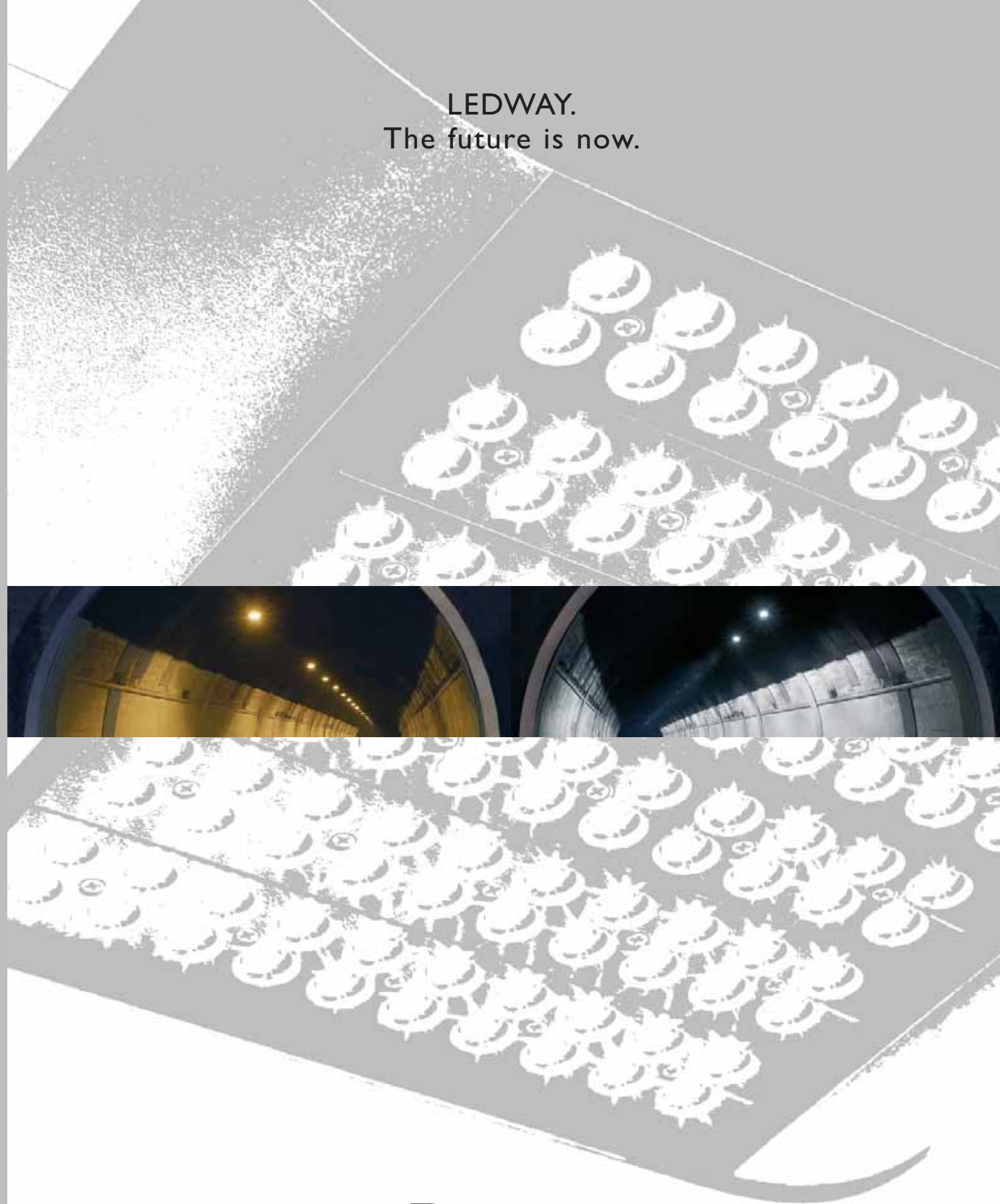
Modular lighting system specially designed for tunnels; complete with main body, power LED modules with multiple configurations, and internal electronic driver. Main body made of extruded aluminum with rectangular section and variable length according to the number of power LED modules used (from 40W, 2 bars up to 80W, 4 bars).



Bollard

Product designed for lighting pedestrian walks, green areas and for urban décor: LEDWAY Bollard features an 18 LED system, each by 1W with symmetric distribution at 360° and asymmetric at 180°.

LEDWAY.
The future is now.



RUUD
LIGHTING

www.ruudlighting.net
www.ruudled.net

RUUD
LIGHTING



Backward...



or forward?

LEDWAY.
One-way to the future.

Product: LEDWAY Tunnel Luminaires

Technical data: 100W HPS lamps were replaced with LEDWAY Tunnel luminaires using three light bars (60W – Initial delivered lumen 5700 per fixture) with asymmetric road optic (TL). Fixtures were installed on the ceiling, at a height of five meters.

Energy Savings: Energy savings from reduced power consumption (80W LED compared to 150W HPS) is about 45 percent. Thanks to the G2 option, a special device able to reduce power consumption to half, 65 percent of lumens are maintained. Total energy savings is around 61 percent.

Luminance: (100W HPS against 60W LED) Data HPS: 3.0 cd/m² average on the ground, 8 lux average on the walls, uniformity low. Ra 25. Data LED: 2.4 cd/m² average on the ground, 50 lux average on the walls, uniformity great Ra 75. The lower luminance level obtained with the LED is compensated with an higher uniformity and with a better visual perception due to the white light.

Extended Life Rating: With an average yearly temperature of 15 degrees Celsius, LEDWAY has a life rating of more than 30 years. A key to extended life rating is efficient thermal management. The integrated thermal design of the housing maximizes on the slightest amount of airflow to draw heat away from the LEDs.

Each LED light bar is mounted to a heat sink to assure LEDs are operating at the optimal temperature. THE EDGE's signature mesh top is designed to minimize debris build-up on the heat sinks and allows for self-cleaning of the unit.

Improved Light Uniformity: The key to controlled LED output is the optical system. LEDWAY uses the NanoOptic™ direct-contact refractor that encases the LEDs for maximum output and optimal light control. The NanoOptic refractor minimizes all light losses and creates efficiencies much greater than traditional reflectors - up to 90 percent.

Reduced Maintenance Costs: LEDWAY products are self-cleaning, significantly reducing maintenance costs. Extended life rating also means less waste.

Positive Environmental Impact: LEDWAY is reliable, safe and durable. LEDs have no arc tube or bulb, is vibration and impact resistant and do not contain mercury or lead. When properly engineered, LED life is more than five times that of metal halide lamps, reducing environmental waste.

Payback: Approximately three years.

Warranty: 5 years on product, 10 years on DeltaGuard™ finish.



**RUUD
LIGHTING**

www.ruudlighting.net
www.ruudled.net